

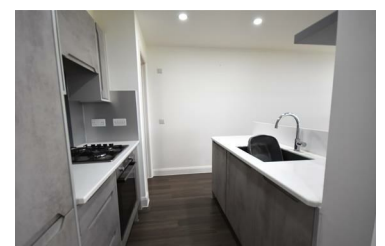
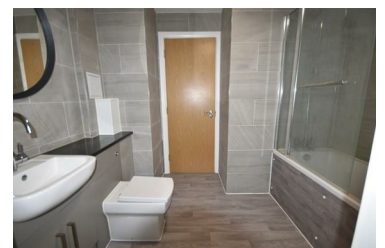


Flat 25 Secret Bunker Shrubland Road, Manningtree,
£1,000 PCM



Executive one bedroom first floor flat located within a short distance of Mistley train station, while Manningtree with its variety of shop bars cafes and restaurants can be found a short drive away.

- Gas underfloor heating
- Kitchen with integrated appliances
- Allocated parking space



Consumer Protection Regulations 2008

Whilst every care is taken to ensure the accuracy of these particulars the Agent has not tested any apparatus, equipment, fixtures, fittings or services and so cannot verify that they are in working order or fit for the purpose. Prospective tenants must therefore satisfy themselves by inspection or otherwise. Photographs are not necessarily current and all descriptions, dimensions and details are given in good faith and believed to be correct but are a general outline for guidance only and should not be relied upon as statement or representation of fact.

MJM House 14 South Street, Manningtree, Essex, CO11 1BB Tel: 01206 394334 Email: info@mjmeates.co.uk

<https://www.mjmeates.co.uk/>