

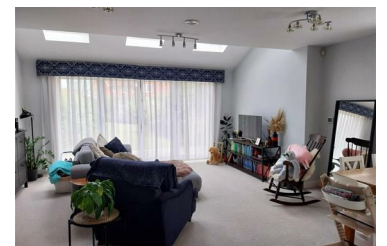


1 Church View, Manningtree, CO11 2BQ

£1,450 PCM



MJM Estates are delighted to offer this former showhouse located on this popular development with easy access to Manningtree mainline train station (London Liverpool street approximately one hour away). The property comprises in brief entrance hall with stairs to first floor, cloakroom with hand basin tiled splash back and WC. The open plan living room/kitchen area is a light spacious area with bi fold doors leading out onto the rear garden. Kitchen area with white fronted units, single drainer sink unit, integrated washing machine, fridge freezer dishwasher, Neff four ring gas hob oven extractor hood over and wine cooler. The ground floor also benefits from underfloor heating. First floor there are three bedrooms the master with fitted wardrobe and ensuite shower room. Bedrooms two and three are situated at the rear of the property. Family bathroom with white suite comprising Bath with shower WC hand basin heated towel rail tiled flooring and part tiling to walls



Consumer Protection Regulations 2008

Whilst every care is taken to ensure the accuracy of these particulars the Agent has not tested any apparatus, equipment, fixtures, fittings or services and so cannot verify that they are in working order or fit for the purpose. Prospective tenants must therefore satisfy themselves by inspection or otherwise. Photographs are not necessarily current and all descriptions, dimensions and details are given in good faith and believed to be correct but are a general outline for guidance only and should not be relied upon as statement or representation of fact.

MJM House 14 South Street, Manningtree, Essex, CO11 1BB Tel: 01206 394334 Email: info@mjmestates.co.uk